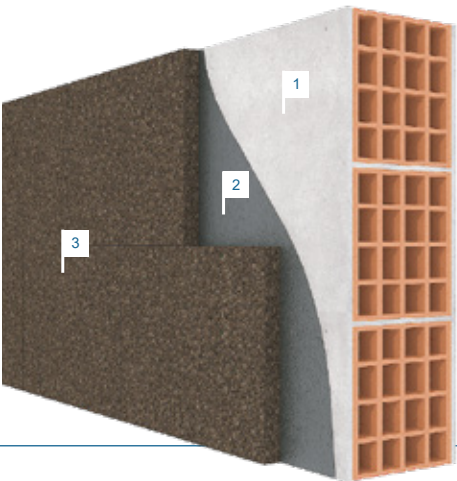


Facade insulation

EXTERIOR FACADE COATING WITH CORK AS EXTERNAL FINISHING – TYPE REV

The Expanded Cork Board slabs of the REV type, for exterior facade coatings with cork as external finishing, are made from a careful selection of raw materials, with the right density, as a way of improving its mechanical resistance, as

well as reducing the water absorption. Its unique characteristics allow an excellent behavior, even when submitted to the most adverse weather conditions.



CHARACTERISTICS	
Density	140 to 160 Kgs/m³
Thermal Conductivity Coefficient	0,042 to 0,046 W/mK
Water absorption	< 0,3 Kg/m²
Dimensions	1000x500mm
Thicknesses	from 40mm to 240mm

- 1. Wall
- 2. Bonding
- 3. Expanded Cork Board (REV type)

Benefits

Facade insulation	Natural and ecological product
Thermal and acoustic isolation	